



SAFE. CONVENIENT. RELIABLE.

SR 836/HEFT (Homestead Extension of the Florida's Turnpike New Ramp Connections

MDX Project No. 83634.010

Project Overview

MDX is evaluating the implementation of the additional traffic movements within the SR 836 / HEFT interchange. MDX is performing this evaluation in close coordination with the Turnpike Enterprise as new connections are connecting to the HEFT. The proposed new movements are:

- Eastbound SR 836 to the northbound HEFT general purpose lanes (pink)
- Southbound HEFT general purpose lanes to westbound SR 836 (red)
- Shifting existing southbound Turnpike general purpose lanes to eastbound SR 836 to accommodate other new ramps (blue)

In addition MDX will evaluate potential connections to the Dolphin Station Park and Ride access roads although they will not be included in the project development and construction of this phase.

- Access from the Dolphin Station Park and Ride to SR 836 westbound (green)
- Access from SR 836 eastbound to the Dolphin Station Park and Ride (orange)

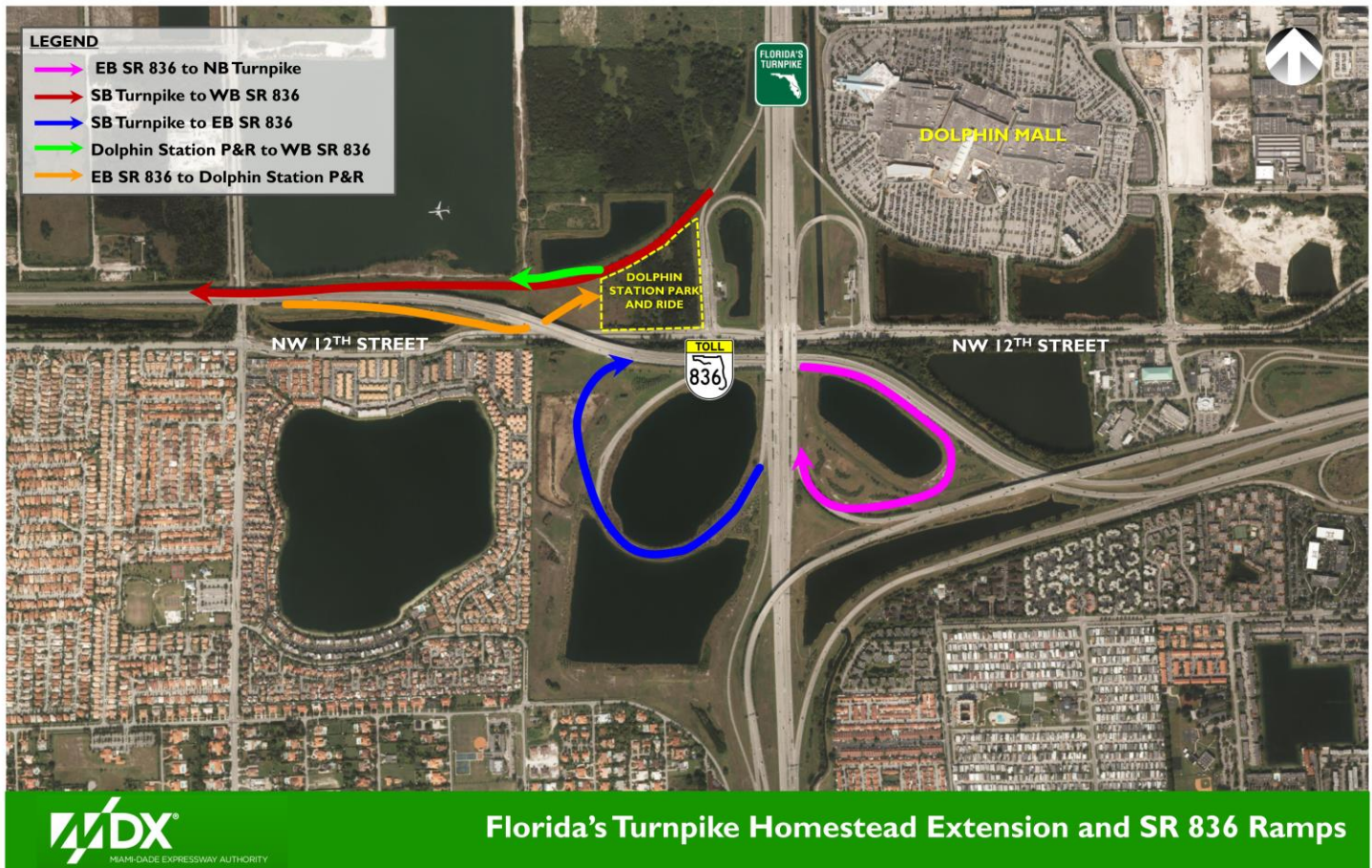
Project Benefits

The new ramps will provide much needed connection between SR 836 and the HEFT to facilitate travel between the southwest and the northwest areas of Miami-Dade County. This will also facilitate access to the Doral area which is one of the main transportation demand generators and an important destination for commuters traveling from the West Kendall area. These new ramps will also facilitate access to proposed new transit facilities in the area such as the now under construction Dolphin Station Park and Ride a joint project between the Miami-Dade Transportation Department, the Florida Department of Transportation and MDX to serve the Express Bus Service on the SR 836/Dolphin Expressway.

Project Schedule

The new ramps with the exception of the direct access ramps to the Dolphin Park and Ride southbound are envisioned to be built together with the Turnpike's proposed express lanes from the SR 836/HEFT Interchange to NW 106 Street as one design-build project. MDX is partnering with the Florida's Turnpike Enterprise for the successful delivery of the project.

Project Map



For More Information: Contact: Tere Garcia, Public Information Officer
Phone: 786.277.9292 | E-mail: tgarcia@mdxway.com

MDX operates and maintains five expressways: SR 112/Airport Expressway, SR 836/Dolphin Expressway, SR 874/Don Shula Expressway, SR 878/Snapper Creek Expressway, and SR 924/Gratigny Parkway. MDX is funded almost entirely by toll revenue and is dedicated to moving Miami-Dade County forward by making your commute faster and safer.